

[Having trouble viewing this email? Click here to view as a webpage.](#)



MASSACHUSETTS  
GENERAL HOSPITAL

HARVARD MEDICAL SCHOOL  
TEACHING HOSPITAL

# CLBB News

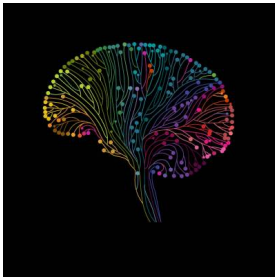
A newsletter from the Center for Law, Brain & Behavior

May 10, 2022

## Online Event Next Week!

### [The Science of Addiction](#)

Register [here](#) to receive access to the livestream!



May 17, 2022, 12:00 PM ET  
CLBB and the Petrie-Flom Center at Harvard Law School

In light of the COVID-19 pandemic, this panel discussion will be held virtually as an online webinar. To ensure that you will receive access to the livestream and be kept up to date on any changes to the event, [register now](#). We will send out a link to the livestream of the event to all registrants the day before and day of the event.

**Last registration is 11:30am on the day of the event.**

### Event Description

Advances in the scientific understanding of addiction have important implications for treatment, policy, and the law. In this panel, **Eden Evins, M.D.** will discuss addiction neuroscience, prognosis, and treatment. **Stephanie Tabashneck, Psy.D., J.D.** will then lead a discussion on the role of addiction science in judicial and legal decision making at the intersection of science and the law.

Join the conversation or submit questions on Twitter [@PetrieFlom](#) using [#LawAndNeuro](#).

*This event is part of the Project on Law and Applied Neuroscience, a collaboration between the Center for Law, Brain and Behavior at Massachusetts General Hospital and the Petrie-Flom Center for Health Law Policy, Biotechnology, and Bioethics at Harvard Law School.*

### Panelists



Introduction: [Carmel Shachar](#), Executive Director, Petrie-Flom Center



**Eden Evins**, M.D., Director, MGH Center for Addiction Medicine and Cox Family Professor of Psychiatry, Harvard Medical School



**Stephanie Tabashneck**, PsyD, JD, Senior Fellow in Law and Applied Neuroscience, CLBB and the Petrie-Flom Center

## CENTER FOR LAW, BRAIN & BEHAVIOR



| [clbb.mgh.harvard.edu](http://clbb.mgh.harvard.edu)